

DAX



ENGINEERING

901/5/1, Makarpura Industrial
Estate, Nr. Pakona Engineering,
G.I.D.C., Vadodara – 390010,
Gujarat, India.

Contact Us:

info@daxengineering.in
9824795386 / 9974530167



www.daxengineering.in



About Us.

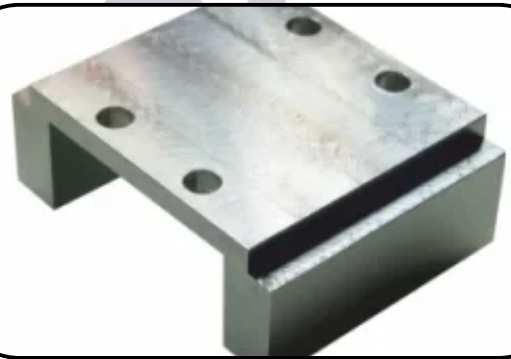
At **DAX ENGINEERING**, we proudly serve a wide range of industries by providing **high-precision engineering and job work** services. Our facility is equipped with advanced machinery, including Vertical Machining Centres (VMC), Turning Centres (CNC), and conventional machines such as lathes and drilling equipment.

We believe that **quality, accuracy, and timely** delivery are the cornerstones of our success. Our operations are supported by a highly qualified and experienced team, utilizing the latest technological trends to deliver superior machining solutions.

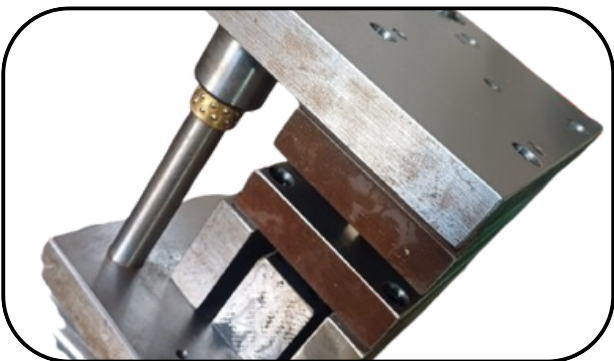
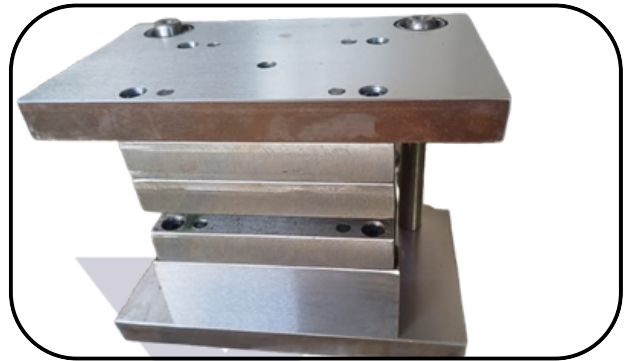
We specialize in the precision machining of various critical components, and samples of our work demonstrate our capabilities and commitment to excellence.

We are eager to establish strong, long-term business relationships with esteemed organizations like yours and would be honored to be included in your vendor list. We assure you of the highest quality service and strict adherence to agreed timelines.

Product Gallery



Product Gallery





Model : JYOTI DX 350 - 1000A

Technical Data Sheet:

Capacity	Unit	Data
Swing over bed, dia	mm	740
Admit between centres	mm	1000
Max. turning length (with chuck)	mm	1000
Interference free facing diameter	mm	310
Maximum turning diameter	mm	600
Chuck Size	mm	350

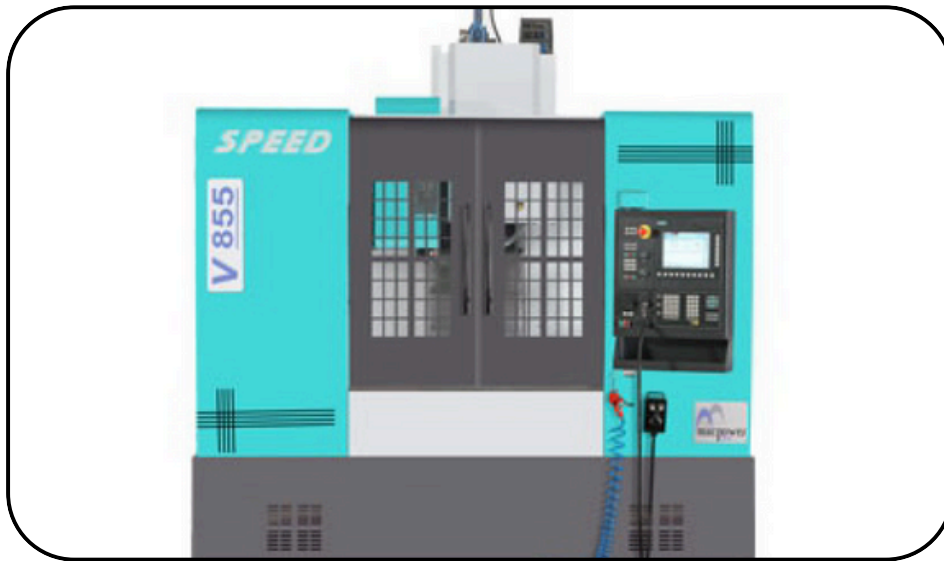
ENGINEERING



JYOTI DX 200 - 5 B

Technical Data Sheet:

Capacity	Unit	Data
Swing over bed, dia	mm	510
Swing over carriage, dia	mm	340
Admit between centres	mm	610
Max. turning length (with chuck)	mm	500*
Interference free facing diameter	mm	265
Maximum turning diameter	mm	490
Chuck Size	mm	200



Model : MacPower Speed V855

Technical Data Sheet:

Capacity	Unit	Data
Table size	mm	1050 X 500
X-Stroke	mm	850
Y-Stroke	mm	510
Z-Stroke	mm	510
Max, Safe Load Capacity	kg	800
Spindle motor Power	kw	7.5 / 11
Rotary Table	mm	Dia 200 (4th Axis)
Controller System		Mitsubishi M70 AV



JYOTI 1060

Technical Data Sheet:

Capacity	Unit	Data
Table size	mm	1250 X 650
X-Stroke	mm	1060
Y-Stroke	mm	600
Z-Stroke	mm	610
Max, Safe Load Capacity	kg	900
Spindle motor Power	kw	11 / 15
Rotary Table	mm	Dia 250 (4th Axis)
Controller System		Mitsubishi M80 AV



Model : JYOTI RX20

Technical Data Sheet:

Capacity	Unit	Data
Table size	mm	1050 X 500
X-Stroke	mm	850
Y-Stroke	mm	510
Z-Stroke	mm	510
Max, Safe Load Capacity	kg	800
Spindle motor Power	kw	7.5 / 11
Rotary Table	mm	Dia 200 (4th Axis)
Controller System		SIMENS 828D

Client List:

Sr.no	Existing Customer Name
1	OMKAR COMPOSITES PVT.LTD
2	AGNI FIBER
3	SPECTRON COMPOSITES PVT. LTD.
4	PAKONA ENGG.
5	SATYAM COMPOSITES PVT. LTD.
6	PLURIMO PULTRUSION AND COMPOSITE PVT.LTD
7	BANSARI COMPOSITES PVT. LTD.
8	JOY FIBER

List of Instrumenmts

Instrument Name	Make	Range/Size	Qty	Unit	Least Count / Graduation
Micro Meter	Insize	0 to 25	1	mm	0.01 mm
Micro Meter	Insize	25 to 50	1	mm	0.01 mm
Micro Meter	Insize	50 to 75	1	mm	0.01 mm
Micro Meter	Insize	75 to 100	1	mm	0.01 mm
Micro Meter	Insize	100 to 125	1	mm	0.01 mm
Micro Meter	Insize	125 to 150	1	mm	0.01 mm
Micro Meter	Insize	150 to 300	1	mm	0.01 mm
Dial Vernier Caliper	Insize	0 to 300	2	mm	0.02 mm
Digital Vernier Caliper	Insize	0 to 200	2	mm	0.01 mm
Digital Vernier Caliper	Insize	0 to 300	1	mm	0.01 mm
Depth / Hook Vernier	Insize	0 to 300	1	mm	0.02 mm
Digital Height Gauge	Insize	0 to 450	1	mm	0.01 mm
Bore Gauge	Insize	18 to 35	1	mm	0.01 mm
Bore Gauge	Insize	35 to 60	1	mm	0.01 mm
Bore Gauge	Insize	50 to 150	1	mm	0.01 mm
Surface Plate (Micro-Flat)	Luthara	600 x 650	1	mm	0 - Grade